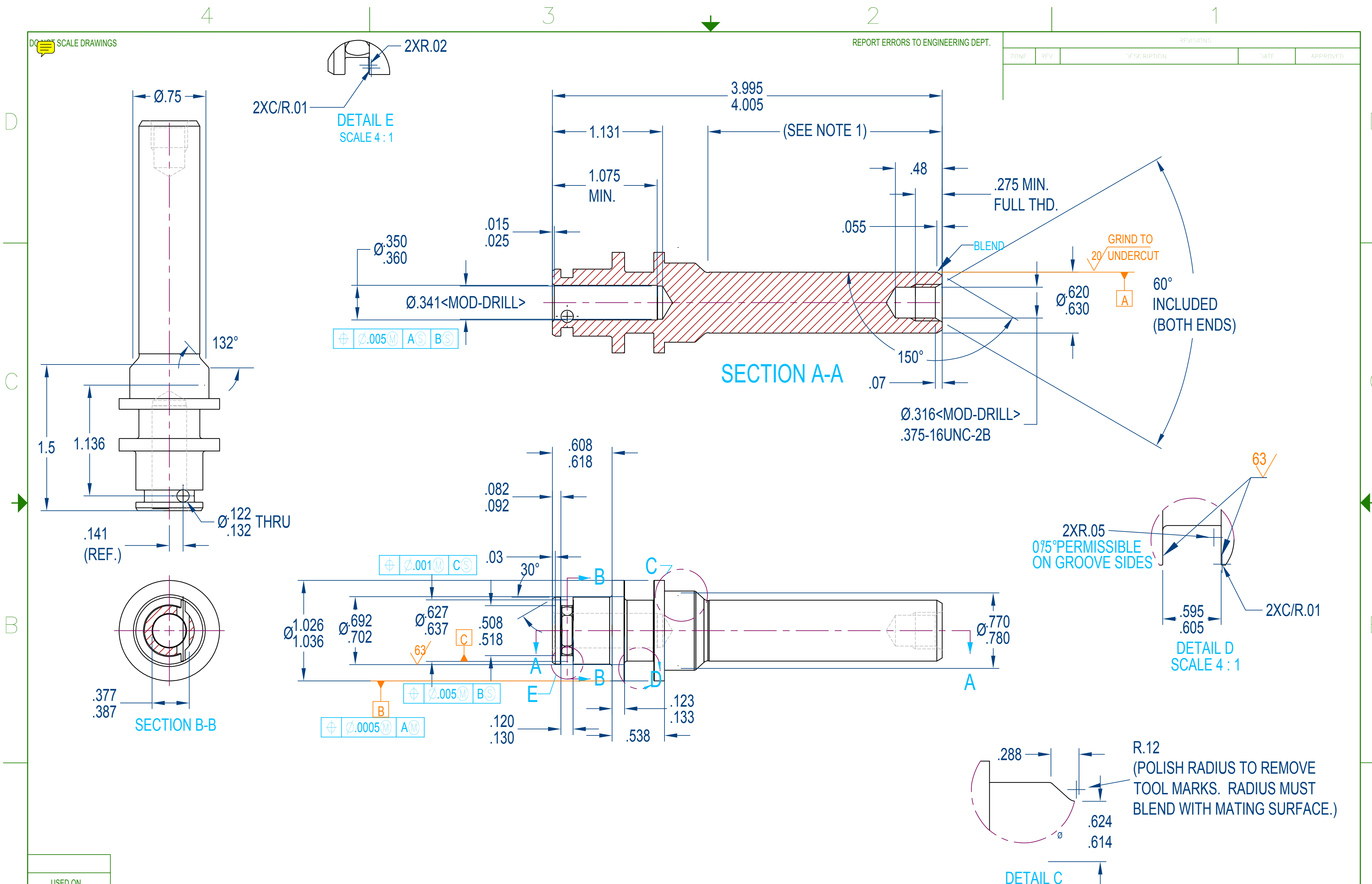


REVISIONS				
ZONE	REV	DESCRIPTION	DATE	APPROVED



**NOTE:**  
 1. HARD CHROME PLATE (.0003/.0005 THK. AFTER PLATING) AREA AS NOTED TO UNDER CUT. DIMENSIONS APPLY AFTER PLATING AND POLISHING.  
 2. BAKE ROD FOR HYDROGEN ENBRITTLMENT 400 ° FOR 4 HRS. WITHIN 4 HRS. OF HARD CHROME.

USED ON	
THIS DRAWING IS THE PROPERTY OF GLOBAL CORPORATION AND THE INFORMATION THEREON IS TO BE TREATED AS CONFIDENTIAL. IT IS NOT TO BE COPIED OR DISCLOSED WITHOUT OUR WRITTEN CONSENT.	
EXCEPT AS NOTED	250 MAX. MACHINED SURFACE ROUGHNESS
BREAK EXTERNAL CORNERS .002 X 45 ° /R. .020	INTERNAL RADII .015 .040 R.
MATL. 4140/4142 C.F. SPEC.	
HEAT TREAT Rc 37-45	FINISH COATING NOTED

DRAWN BY Huff	DATE 8/10/07
CHECKED BY Bowman	SCALE 1.5=1
APPROVED BY HUFF	PROJ. ENG. SMITH

<b>GLOBAL CORPORATION</b>			
<b>ROD, PISTON (1-1/2 CLAMP)</b>			
SIZE C	FORM NO.	DWG. NO. P-125-014	REV. A
SCALE 1.5=1	SHEET 1		